

# MONTHLY MEMBERSHIP PROGRESS REPORT

LOCATION AUSTRALIA

District 201Q1

Results as of: 5/31/2022

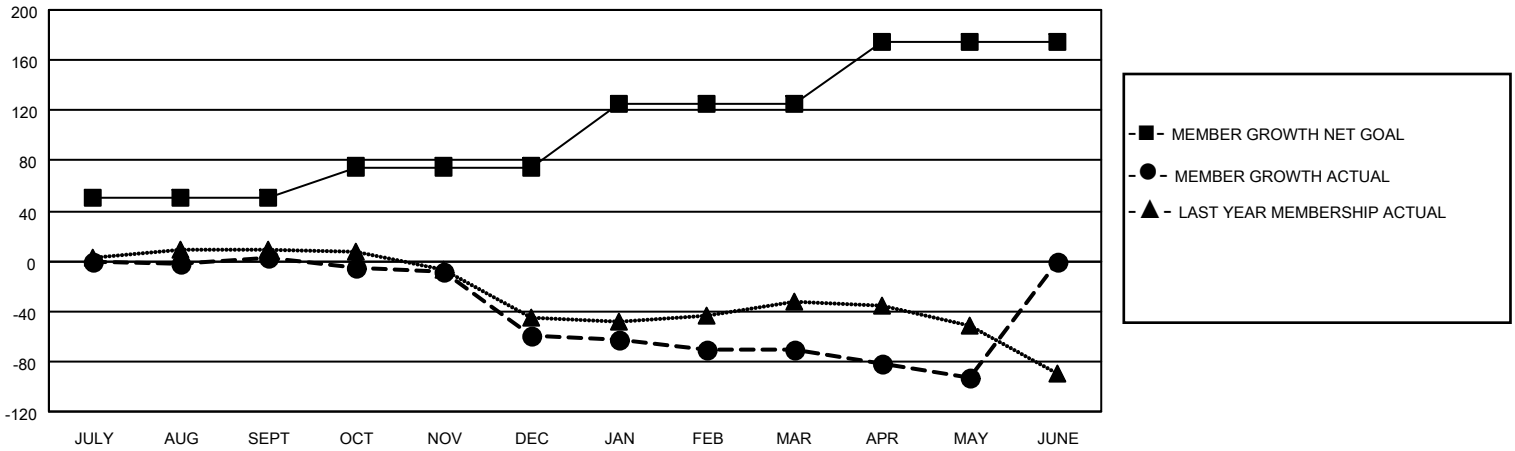
Clubs			
RESULTS FOR 2021-2022			
QUARTER	NEW CLUB GOAL	NEW CLUBS	DROPPED CLUBS
JULY/AUG/SEPT	0	0	1
OCT/NOV/DEC	0	0	1
JAN/FEB/MAR	1	0	1
APR/MAY/JUNE	1	0	0

Members			
RESULTS FOR 2021-2022			
QUARTER	MEMBER GROWTH NET GOAL	MEMBER GROWTH ACTUAL	DROPPED MEMBERS ACTUAL (including transfers)
JULY/AUG/SEPT	50	43	31
OCT/NOV/DEC	25	37	96
JAN/FEB/MAR	50	34	35
APR/MAY/JUNE	50	20	42

**GOALS AND ACTUAL NEW CLUBS CUMULATIVE**



**GOALS AND ACTUAL MEMBERS CUMULATIVE**



**DROPPED CLUBS: 3**

**43 CLUBS OF 75 ADDED 1 OR MORE NEW MEMBERS**

**GENDER DISTRIBUTION**

MALE	860 (59.76%)
FEMALE	579 (40.24%)
NON BINARY	0 (0.00%)
PREFER NOT TO ANSWER	0 (0.00%)

**DROPPED MEMBERS**

[CLICK HERE FOR CUMULATIVE MEMBERSHIP DATA](#)

DECEASED	25
CLUB CANCELLED	0
OTHER	179
<b>TOTAL</b>	<b>204</b>

TOTAL FAMILY UNIT MEMBERS	261
FAMILY MEMBERS PAYING HALF DUES	132